

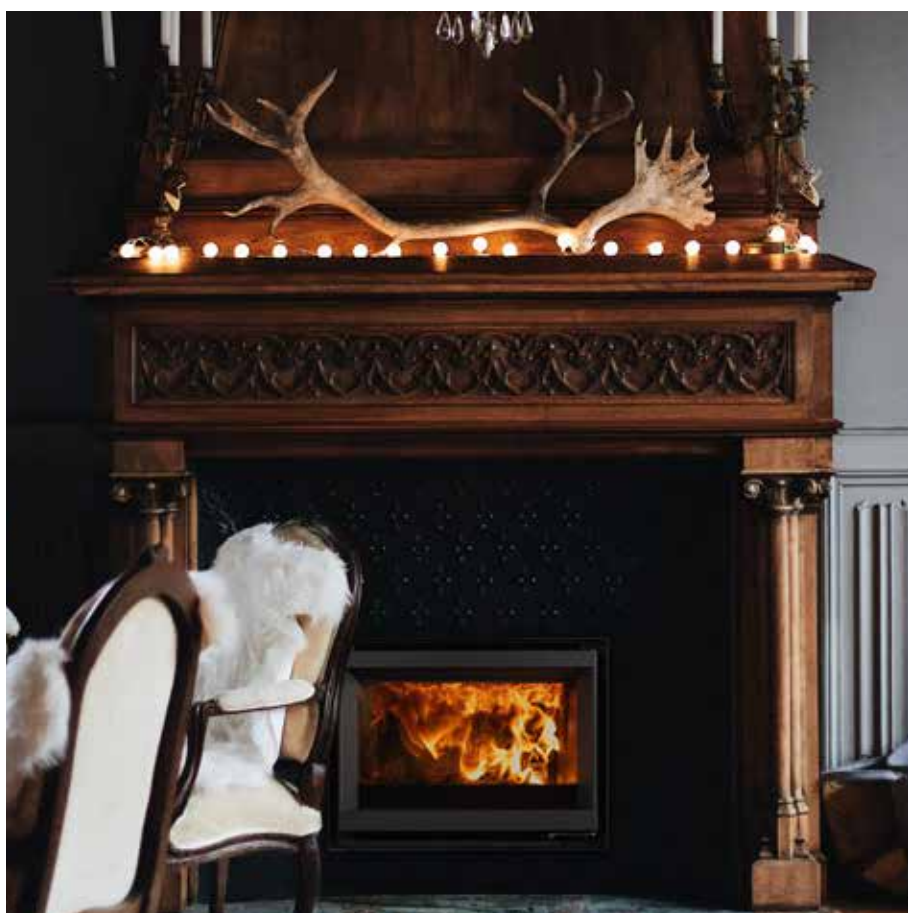
Stûv 6-in

Wood insert

Stûv 6, innovation through design & experience.

The Stûv 6 is a wood-burning insert suited to small spaces while offering a generous view of the fire.

It is perfect for masonry hearths and for wood-fire enthusiasts.



The fire at the front line

Stûv 6 units offer a breathtaking view of the fire. The combustion chamber widens toward the front to reach the streamlined door frame. This shape, unique to Stûv 6, has made it possible to reduce the insert dimensions while making the fire the focus.

Heating power adapted to the smallest spaces

The Stûv 6 is a wood-burning insert perfectly suited to the smaller hearths of yesteryear while meeting today's needs, in homes that are better insulated and already have a main heating system. Stûv 6 produces a gentle, pleasant warmth for ultimate comfort. .



Automatic control mode

The Stûv 6's air intake is factory-configured to perfectly calibrate the amount of air in the combustion chamber for optimal performance. Gone are the days of having to constantly adjust the damper to increase or decrease the air supply in the combustion chamber. With Stûv 6, simply light the fire, sit back and enjoy.

Innovative features ensure optimal operation of a Stûv 6



Installation casing

The combustion chamber's detachable casing makes installing Stûv 6 a breeze. Separated from the heavier, cast iron combustion chamber, the lightweight support casing greatly simplifies the installation process.



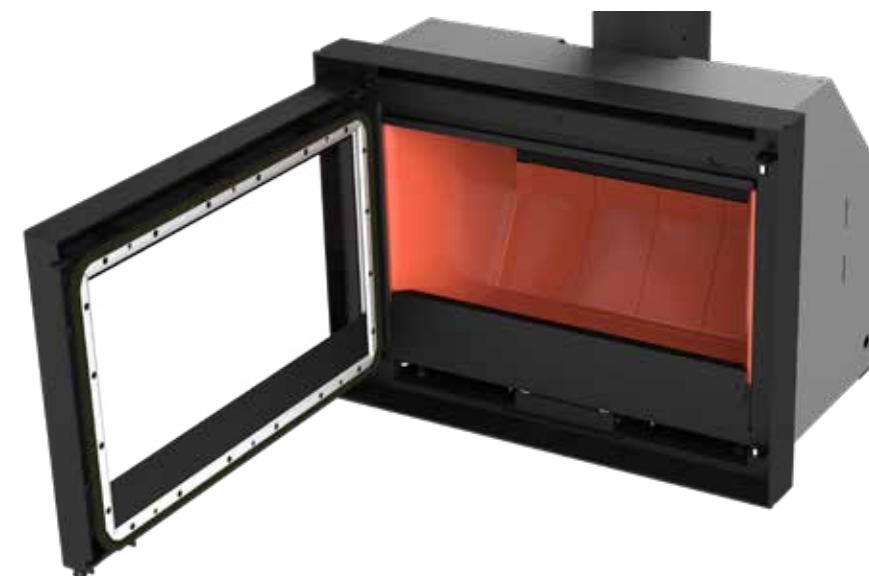
Bi-metal system

The difference in thermal expansion of two metal plates built into the bottom of the combustion chamber allows the fireplace to autonomously manage the amount of air that is needed to start a fire. This helps bring in the air that is needed and makes it easier to start a fire when the unit is cold.



Angled smoke outlet

The Stûv 6 offers the possibility to install a vertical smoke outlet or an angled flue useful for connecting to a more remote duct.



Combustion chamber in cast iron

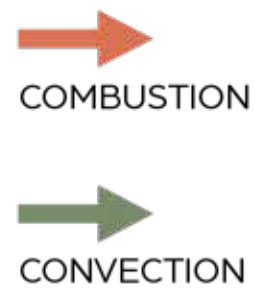
The Stûv 6 combustion chamber is made of cast iron. It thus ensures high heat resistance and maximizes the unit performance.



Double hook door

The hinged door of the Stûv 6 has two hooks to ensure its solidity and make the combustion chamber even more airtight.

When performance enhances the fire



1 The air required for combustion can either be taken from the room via the front of the insert, or via an outside air inlet.

2 Air injectors at the top of the combustion chamber allow for a second combustion of the gases this reduces the release of fine particulates into the air.

3 Once burned, the smoke is evacuated through the flue.

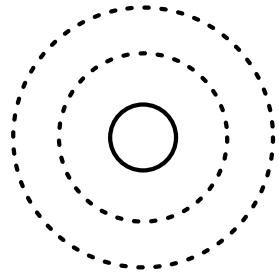
4 The air flow along the glass keeps the glass clean while increasing the unit's efficiency.

5 The air taken from the room via the front of the unit circulates along the combustion chamber and absorbs the heat.

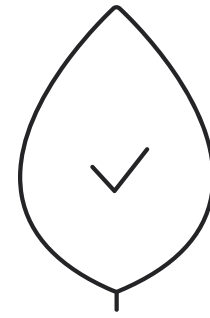
6 Once heated, the ambient air naturally exits through the unit's top frame, spreading comforting warmth through the room.

Technical documents

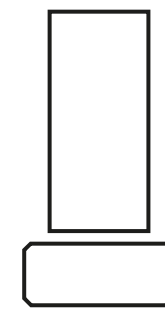
Stûv 6, a new growing family



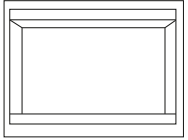
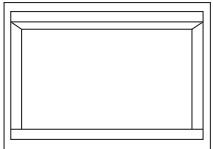
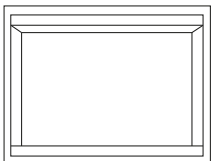
Heat up to 1 400 ft²
(44 000 BTU)



Low Fine Particulate
Matter Emissions



Integrated handle
for a clean design

Stûv 6-in	Model	Certified	Nominal heat output*	Heating surface area	Combustion chamber	Efficiency	Fine particle emissions	Weight
	66x50	✓	34 000 BTU/h	1 000 ft ²	1.08 ft ³	68.4%	1.93 g/h	165 lb
	76x55	✓	39 000 BTU/h	1 300 ft ²	1.55 ft ³	67.6%	1.86 g/h	190 lb
	76x60	✓	44 000 BTU/h	1 400 ft ²	1.58 ft ³	68.3%	1.89 g/h	200 lb

*For additional information on powers, please see: <https://stuvamerica.com/en/inspirations/tips-and-techniques/power-btu/>

Customize your Stûv 6



Mobile log rack

The mobile log rack, available in two sizes, is the ideal solution for storing wood. It moves easily thanks to its silicone wheels.

2 available sizes :
1- 13 ³/₈ x 15 ³/₄ x 40 ¹/₂
2- 15 ¹/₂ x 20 ¹/₂ x 50 ³/₄



Mobilobox

This small mobile box is not only easy to handle, but it also has an integrated storage for firewood, matches and fire starters.

Overview of frames for Stûv 6

Stûv 6 frames offer a sleek design to complete the decor.



Thin Edge Frame

This steel frame offers clean lines for a refined look.



2" Picture Type Frame

This 2" steel frame is equipped with an adjustable counter-frame (3-4") for different depth options.



4" Picture Type Frame

This 4" steel frame is ideal for units installed in large masonry hearths, creating a beautiful finish. Consisting of an adjustable counter-frame (3-4"), it offers different depth options.



6" Picture Type Frame

This 6" steel frame creates an impeccable finish for units installed in very large masonry hearths. Depth adjustments (3-4") can be made thanks to its counter-frame.

Accessories



Smoke Outlet - VERTICAL

This outlet provides straight-line evacuation of the smoke to the outside.

It is available in 6" format.



Smoke Outlet - ANGLED

This outlet provides angled evacuation of the smoke to the outside.

It is available in 6" format.



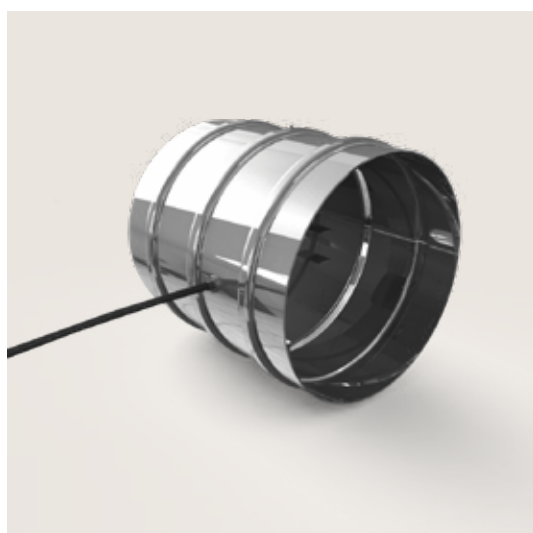
Outside air intake connector - UNDER THE UNIT

This connector makes it possible to connect the outside air intake directly to the combustion chamber. Its design is adapted for installation from underneath the unit.



Outside air intake connector - REAR

This accessory makes it possible to connect the outside air intake directly to the combustion chamber. It is designed to be installed at the back of the unit.



4" air damper

This airtight damper prevents outside air from coming into the house when the unit is not in use. This accessory is strongly recommended for homes with very high airtightness standards.



Connection kit for outside air intake

This kit connects the outside air intake to the appropriate connector for each unit. It includes a 4" diameter, 12' long insulated duct and a white grill.