

---

## Wood fireplace

---

The s16-Z allows you to integrate a wood fireplace into the heart of your living space, even when space is limited. Thanks to its insulated enclosure and shallow depth, it can be installed without complex construction work and without visible convection grilles. A solution designed to bring your project to life, whether in new builds or renovations.

## Power to match your space

The s16-Z delivers high heating output, capable of quickly warming large areas. It combines performance and efficiency for broad, comfortable heat.



## Fire takes center stage

The s16-Z offers a wide view of the flames, among the most generous on the market for a fireplace compliant with the strictest environmental standards in North America. The flame display is striking, and the fire becomes a central element of everyday living space.



## Sober. Elegant. Timeless.

Its clean lines fade into the background, giving way to the fire. With no visible handle, the opening is operated using a removable key. Convection is integrated around the perimeter of the unit, with no visible grilles to disrupt the design. A refined whole, designed to stand the test of time.



## Innovative features ensure optimal operation of s16-Z



### Integrated and silent convection

Heat is returned to the room through an opening located between the combustion chamber and the Stuv 16 casing. No fan is required, as convection occurs through natural gravity.



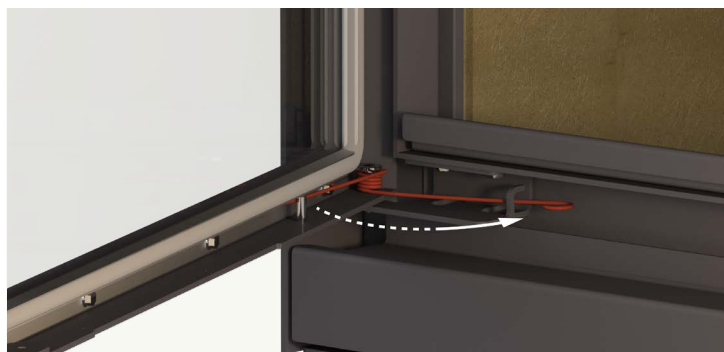
### Connection to the outside air intake

An opening located beneath the appliance is specifically designed to connect an external air intake directly to the combustion chamber. The fire draws oxygen from outside the house, thereby ensuring optimal combustion.



### Mobile smoke deflector

A mobile smoke deflector opens and closes with the door on the Stuv 16. When the door is open, it allows smoke to escape, preventing backflow into the room. When the door is closed, the deflector slows the evacuation of smoke, promoting a second combustion of gases within the appliance.



### Safety spring

A small spring is positioned at the bottom of the door to ensure it closes when released. The door, when partially closed, creates an air-blowing effect on the flames that promotes combustion and prevents sparks or embers from falling onto the floor.

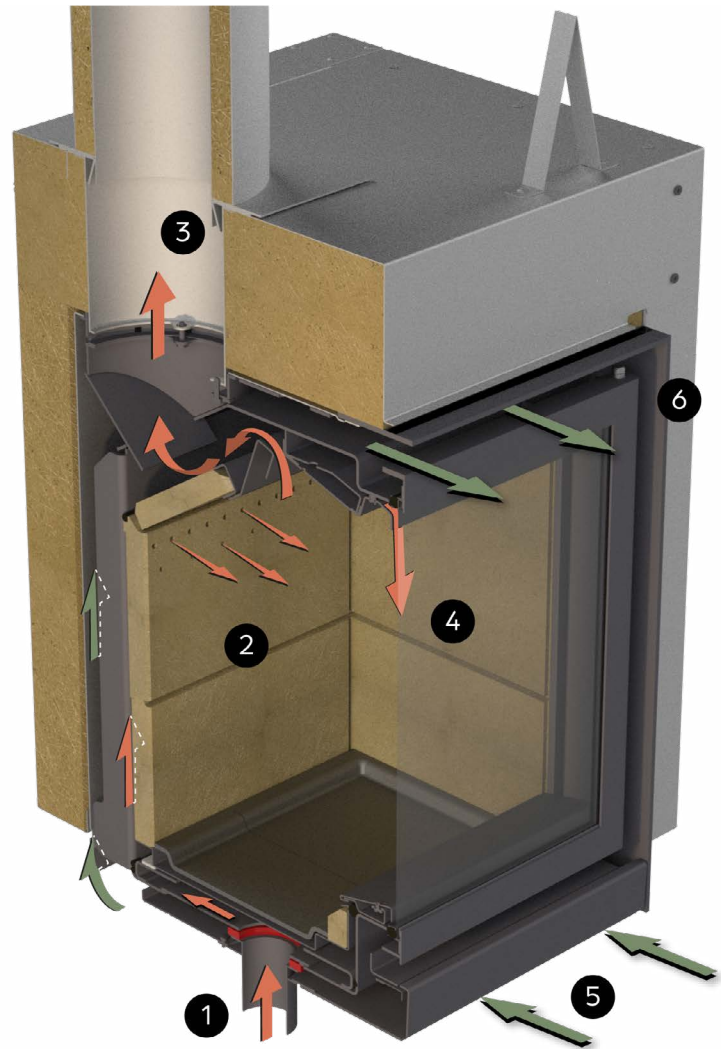


### Double hook door

The hinged door of the Stuv 16 features two hooks to ensure its strength and further improve the airtightness of the combustion chamber.



## When performance enhances the fire



[1] The air required for combustion comes directly from under through an outside air intake connector specially designed for the s16-Z model.

[2] Air injectors at the top of the combustion chamber allow for a second combustion of the gases, reducing fine particles emissions into the air.

[3] Once the gases have burned, they are evacuated through the flue pipe.

[4] The sweeping air flow removes dust from the glass due to combustion, providing a perfect view of the flames.

[5] The air is taken from the room and heated by the unit, the convection air circulates along the combustion chamber and absorbs the heat.

[6] The heated air comes out naturally from unit and distributes a comforting warmth into the room.



## s[16]Z

58

68

78



## Performances

Particulate matter	1.5 g/h	1.7 g/h	1.8 g/h
Burn rate	4.1 lb/h	4.1 lb/h	4.4 lb/h
EPA Efficiency	71 %	66 %	67 %
Maximum heat output	65 000 BTU/h	82 000 BTU/h	86 000 BTU/h
EPA heat output	27 015 BTU/h	23 727 BTU/h	27 092 BTU/h
Nominal heat output	46 000 BTU/h	50 000 BTU/h	58 000 BTU/h
Certifications	UL / ULC / EPA / CSA B415.1-22	UL / ULC / EPA / CSA B415.1-22	UL / ULC / EPA / CSA B415.1-22
Combustion chamber volume	1.6 pi <sup>3</sup>	1.9 pi <sup>3</sup>	2.2 pi <sup>3</sup>
Logs - Maximum length	17"	21"	25"
Estimated heating area	1 400 pi <sup>2</sup>	1 650 pi <sup>2</sup>	2 100 pi <sup>2</sup>
Weight	232 lb	261 lb	288 lb
Colors	StûvGrey	StûvGrey	StûvGrey



## Finishing frames

Steel finishing frames provide an elegant finish and help enhance the presence of the fireplace in the space. They are available in StûvGrey finish and for the 58, 68, and 78 formats.



### Thin-edge frame

For a clean result, this ultra-thin steel frame creates a frameless effect around the appliance.



### 2" picture-type frame

This 2 in ( $\pm \frac{3}{4}$  in) adjustable frame fills the space between the appliance and the surrounding wall for a clean, refined finish.



### 4" picture-type frame

This 4 in ( $\pm \frac{3}{4}$  in) adjustable frame provides generous coverage around the fireplace for a more pronounced framing and a refined finish.



### 6" picture-type frame

This 6 in ( $\pm \frac{3}{4}$  in) adjustable frame provides generous framing to enhance the presence of the fireplace.



### 3-sided custom frame

You choose the dimensions. This frame is precisely tailored to your fireplace for a perfectly fitted finish.

## Finishings



### Mobile log rack

The mobile log rack, available in two sizes, is the ideal solution for storing wood. It moves easily thanks to its silicone wheels.

Available in 2 formats:

- 13  $\frac{3}{8}$  x 15  $\frac{3}{4}$  x 40  $\frac{1}{2}$
- 15  $\frac{1}{2}$  x 20  $\frac{1}{2}$  x 50  $\frac{3}{4}$

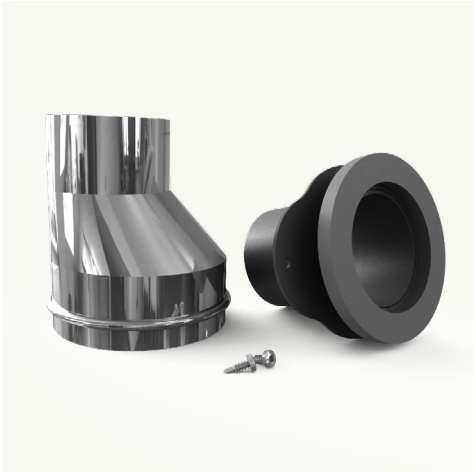


### Mobilobox

In addition to being easy to handle, the Mobilobox features integrated storage for kindling, matches, and fire starters.



## Accessories



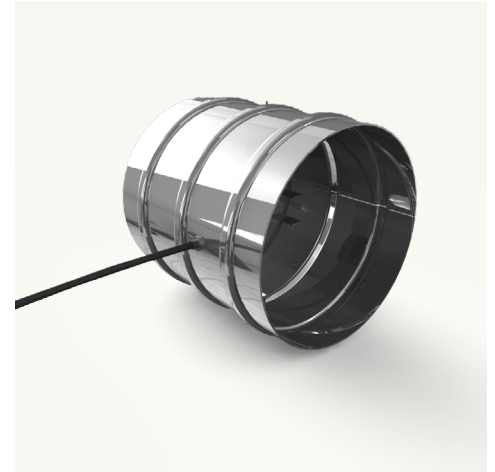
### Outside air intake connector

This connector allows the outside air intake from the house to be connected directly to the combustion chamber of the appliance.



### Adjustable legs

These adjustable steel legs are perfect for quickly and easily adjusting your appliance to the desired height. Maximum height: 24in.



### Air damper

This damper prevents outside air from coming into the house when the unit is not in use. This accessory is strongly recommended for very airtight home standards. Available in 4 or 6 in.



### Connection kit for outdoor air intake

This kit connects the outside air intake to the appropriate connector for each unit. It includes a 4in diameter, 12' long insulated duct and a white grill.



### StuvGrey paint

400ml spray paint ideal for covering scratches and doing touch-ups on appliances, or painting the flue pipe the same colour as the unit.