

s[16]in

stûv

Wood fireplace

The s16-in integrates into your existing masonry hearth, restoring its full function: efficient heating that meets today's environmental standards, without major renovation work. Fire returns to the heart of everyday living, offering a wide view of the flames and generous heat distribution.

Where fire becomes the focus

In a masonry hearth, the width of the opening is part of the experience. The s16-in preserves it, offering a fire view that is nearly as generous as the original. The fire becomes the focal point of the space, delivering a daily spectacle without compromise.



Sober. Elegant. Timeless.

Its clean lines fade into the background, allowing the fire to take center stage. With no visible handle, the door is opened using a removable key. Convection is fully integrated. No visible grilles interrupt the design or add visual weight. A refined design, conceived to stand the test of time, that fits seamlessly into any interior, from classic to contemporary.

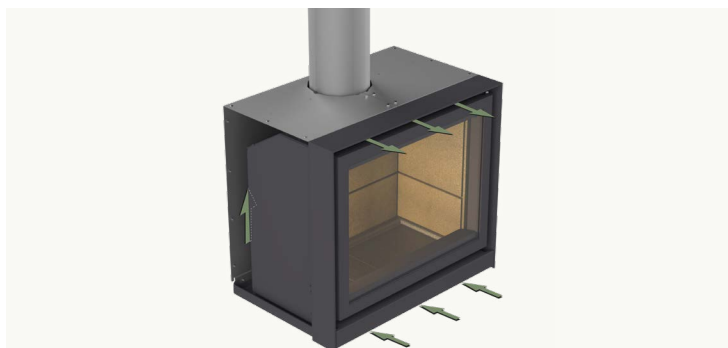


Designed to integrate into your existing hearth

The s16-in is available in multiple sizes to accommodate a wide range of masonry hearths. Several finishing frames allow the space between the appliance and the masonry to be seamlessly filled, ensuring an elegant and harmonious integration. A solution that minimizes renovation work, without compromising the final result.



Innovative features ensure optimal operation of s16-in



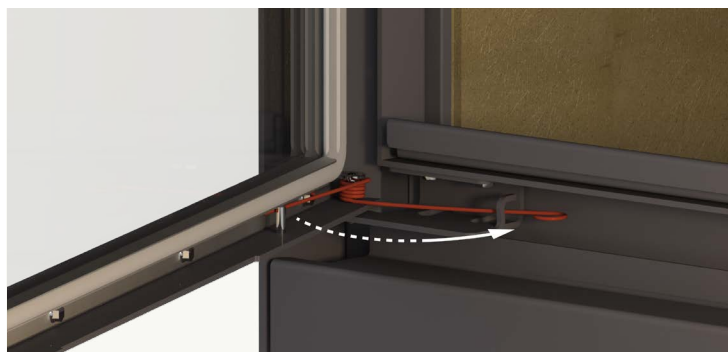
Integrated and silent convection

Heat is returned to the room through an opening located between the combustion chamber and the Stuv 16 casing. No fan is required, as convection occurs through natural gravity.



Mobile smoke deflector

A mobile smoke deflector opens and closes with the door on the Stuv 16. When the door is open, it allows smoke to escape, preventing backflow into the room. When the door is closed, the deflector slows the evacuation of smoke, promoting a second combustion of the gases within the appliance.



Safety spring

A small spring is positioned at the bottom of the door to ensure it closes when released. The door, when partially closed, creates an air-blowing effect on the flames that promotes combustion and prevents sparks or embers from falling onto the floor.

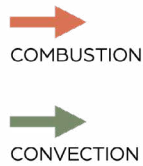


Double hook door

The hinged door of the Stuv 16 features two hooks to ensure its strength and further improve the airtightness of the combustion chamber.



When performance enhances the fire



[1] The air required for combustion comes directly from under through an outside air intake connector specially designed for s16 models.

[2] Air injectors at the top of the combustion chamber allow for a second combustion of the gases, reducing particulate matter emissions.

[3] Once the gases have burned, they are evacuated through the flue pipe.

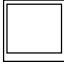

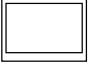
[4] The sweeping air flow removes dust from the glass due to combustion, providing a perfect view of the flames.

[5] The air is taken from the room and heated by the unit, the convection air circulates along the combustion chamber and absorbs the heat.

[6] The heated air comes out naturally from the unit and distributes a comforting warmth into the room.



s[16]in

	58	68	78
			
Performances			
Particulate matter	1.5 g/h	1.7 g/h	1.8 g/h
Burn rate	4.1 lb/h	4.1 lb/h	4.4 lb/h
EPA Efficiency	71 %	66 %	67 %
Maximum heat output	65 000 BTU/h	82 000 BTU/h	86 000 BTU/h
EPA heat output	27 015 BTU/h	23 727 BTU/h	27 092 BTU/h
Nominal heat output	46 000 BTU/h	50 000 BTU/h	58 000 BTU/h
Certifications	UL / ULC / EPA / CSA B415.1-22	UL / ULC / EPA / CSA B415.1-22	UL / ULC / EPA / CSA B415.1-22
Combustion chamber volume	1.6 pi ³	1.9 pi ³	2.2 pi ³
Logs - Maximum length	17"	21"	25"
Estimated heating area	1 400 pi ²	1 650 pi ²	2 100 pi ²
Weight	180 lb	205 lb	228 lb
Colors	StûvGrey	StûvGrey	StûvGrey



Finishing frames

Steel finishing frames elegantly bridge the space between the appliance and the masonry, while enhancing the presence of the fireplace in the space. Offered in StûvGrey finish, they are available for the 58, 68, and 78 formats.



Thin-edge frame

For a clean result, this ultra-thin steel frame creates a frameless effect around the appliance.



2" picture-type frame

This 2 in ($\pm \frac{3}{4}$ in) adjustable frame fills the space between the appliance and the surrounding wall for a clean, refined finish.



4" picture-type frame

This 4 in ($\pm \frac{3}{4}$ in) adjustable frame provides generous coverage around the opening for a more pronounced framing and a refined finish.



6" picture-type frame

This 6 in ($\pm \frac{3}{4}$ in) adjustable frame provides generous framing to enhance the presence of the appliance.



3-sided custom frame

You choose the dimensions. This frame is precisely adapted to your hearth for a perfectly tailored finish.

Finishings



Mobile log rack

The mobile log rack, available in two sizes, is the ideal solution for storing wood. It moves easily thanks to its silicone wheels.

Available in 2 formats:

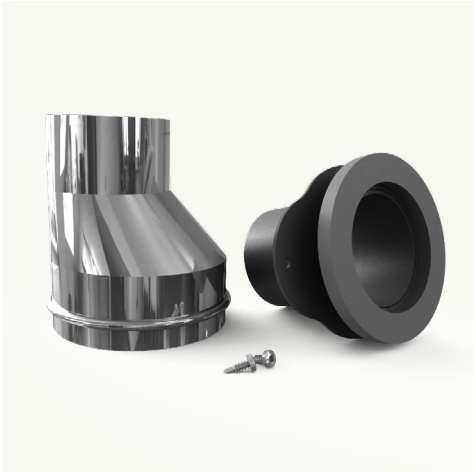
- 13 $\frac{3}{8}$ x 15 $\frac{3}{4}$ x 40 $\frac{1}{2}$
- 15 $\frac{1}{2}$ x 20 $\frac{1}{2}$ x 50 $\frac{3}{4}$



Mobilobox

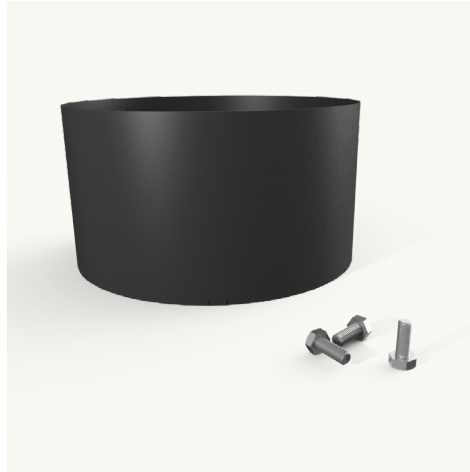
In addition to being easy to handle, the Mobilobox features integrated storage for kindling, matches, and fire starters.

Accessories



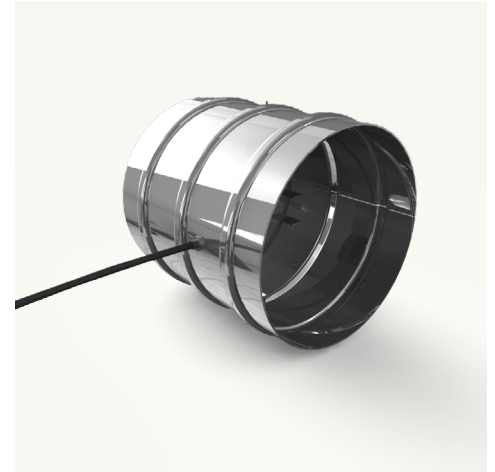
Outside air intake connector

This connector allows the outside air intake from the house to be connected directly to the combustion chamber of the appliance.



Chimney adapter

This 7 in adapter allows you to enlarge the chimney diameter of your appliance (standard 6 in) to increase the flue pull. This accessory is strongly recommended if the length of your chimney is less than 18 feet.



Air damper

This damper prevents outside air from coming into the house when the unit is not in use. This accessory is strongly recommended for very airtight home standards. Available in 4 or 6 in.



Connection kit for outdoor air intake

This kit connects the outside air intake to the appropriate connector for each unit. It includes a 4in diameter, 12' long insulated duct and a white grill.



StuvGrey paint

400ml spray paint ideal for covering scratches and doing touch-ups on appliances, or painting the flue pipe the same colour as the unit.